

# 18th Essential oil component analysis report

Essential oil name:	Kuromoji Essential oil		
Scientific name:	<i>Lindera umbellata</i>		
Origin:	Japan (Minamiaizu)	Year of manufacture:	2019
Extraction site:	Branches and leaves	Method:	Steam distillation
specific gravity:	0.863 (20°C)	refraction:	-

Jyuhachinichi, Ltd.

2-7-1 Wakaba, Shinjuku-ku, Tokyo

Video Focus Building 4th floor 〒160-0011

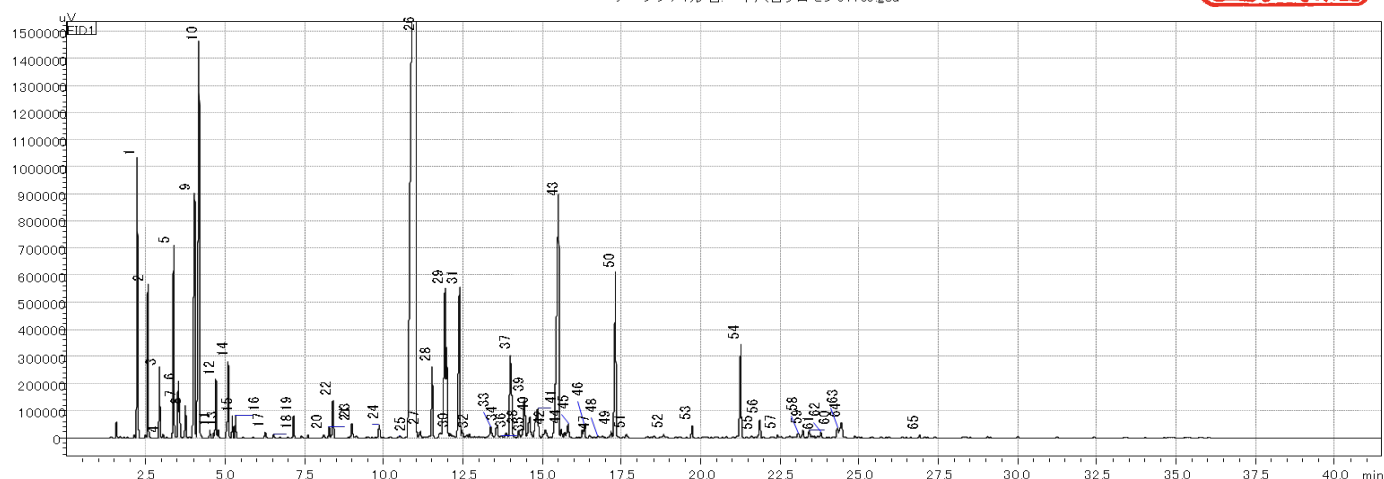
TEL: 03-5362-3188

info@18th.co.jp

http://www.18th.co.jp



データファイル名: 一十八日クロモジ01109.gcd



peak#	Compound name	%
1	$\alpha$ -pinene	3.7%
2	Camphene	1.7%
3	$\beta$ -pinene	0.8%
5	myrcene	2.4%
9	limonene	4.4%
10	1,8-cineole	6.9%
11	trans- $\beta$ -Ocimene	0.1%
12	$\gamma$ -terpinene	0.8%
13	trans- $\beta$ -Ocimene	0.1%
14	p-cymene	1.1%
16	terpinolene	0.3%
17	Methylheptenone	0.1%
19	cis-3-Hexenal	0.3%
22	cis-linalool oxideTHF	0.6%
24	trans-linalool oxideTHF	0.2%
26	linalool	43.4%
28	Bornyl acetate	1.1%
29	terpinen-4-ol	4.8%
30	$\beta$ -Caryophyllene	0.1%
31	trans-Dihydrocarvone	3.1%
37	$\alpha$ -terpineol	2.1%
40	Neryl acetate	0.6%
41	geranial	1.1%
42	Germacrene D	0.3%
43	geranyl acetate	7.2%
46	nerol	0.3%
50	geraniol	3.2%
53	Caryophyllene oxide	0.2%
54	trans-Nerolidol	1.8%
	Other	7.2%
合計		100.0%