

# 18th Essential oil component analysis report

Essential oil name:	Kusunoki(camphor) EssentialOil		
Scientific name:	<i>Cinnamomum camphora</i>		
Origin:	Japan(Saga prefecture)	Year of manufacture:	2019
Extraction site:	Xylem	Method:	Steam distillation
specific gravity:	0.935	refraction:	-

Jyuhachinichi,Ltd.



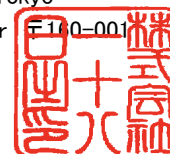
2-7-1 Wakaba, Shinjuku-ku, Tokyo

Video Focus Building 4th floor

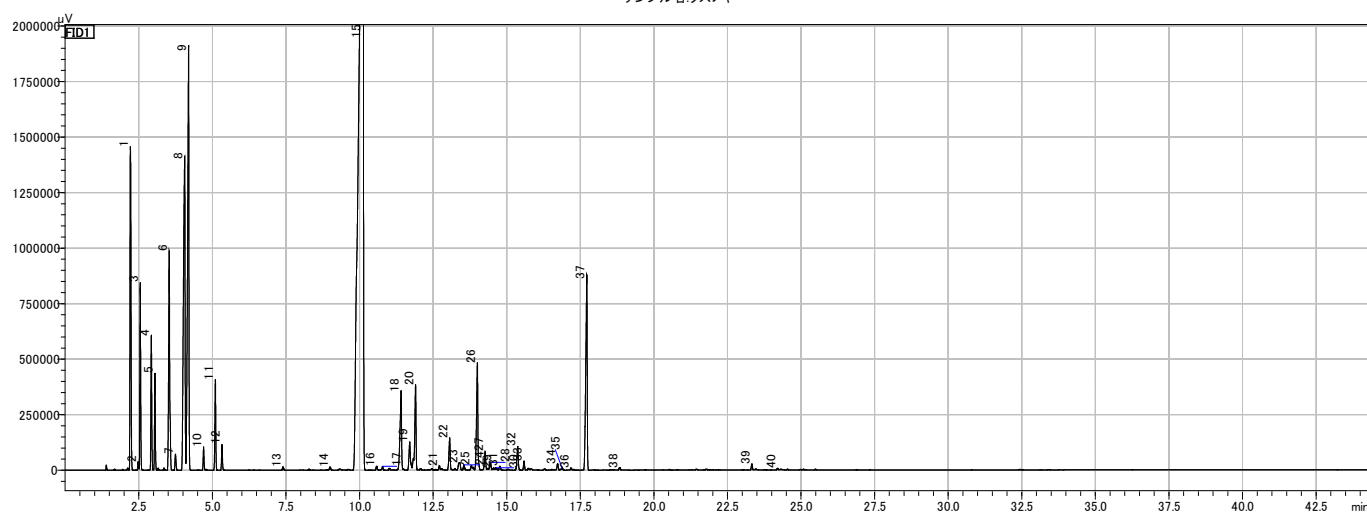
TEL:03-5362-3188

info@18th.co.jp

http://www.18th.co.jp



データファイル名:クスノキ.gcd  
サンプル名:クスノキ



peak#	Compound name	%
1	α-pinene	5.2%
2	δ-3-carene	0.1%
3	Camphene	2.4%
4	β-pinene	1.8%
6	myrcene	3.9%
7	α-terpinene	0.3%
8	limonene	8.1%
9	1,8-cineole	9.0%
10	γ-terpinene	0.3%
11	p-cymene	1.3%
12	terpinolene	0.4%
15	camphor	51.1%
17	linalool	0.1%
18	bornyl acetate	2.0%
20	terpinen-4-ol	1.8%
21	β-elemene	0.1%
24	borneol	0.1%
26	α-terpineol	2.3%
32	germacrene d	0.5%
33	citronellol	0.2%
34	nerol	0.1%
36	geraniol	0.0%
37	safrole	4.5%
38	caryophyllene oxide	0.1%
39	eugenol	0.1%
	Other	4.1%
合計		100.0%