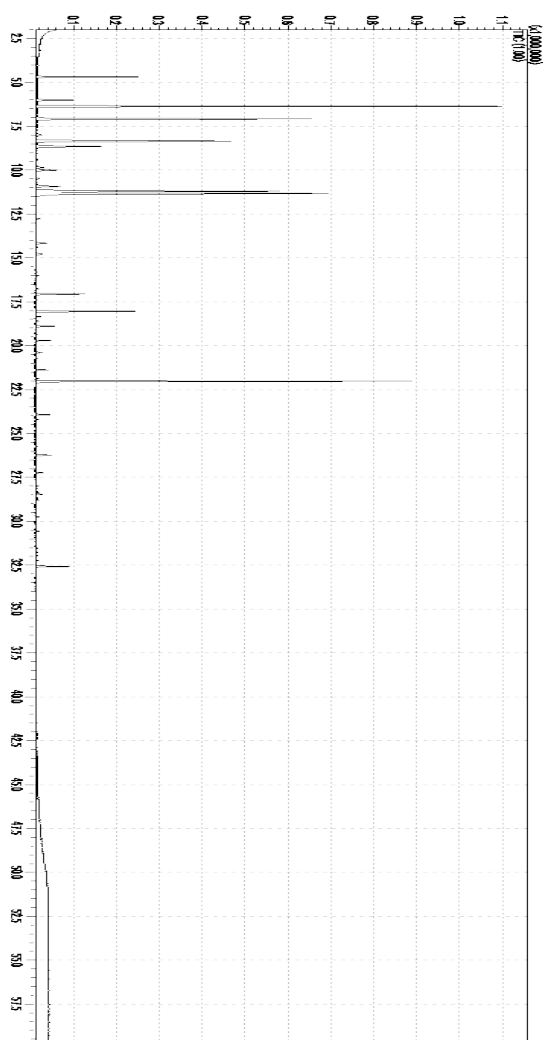


GC-MS Analysis Report

Hida Sangyo Co., Ltd.
3180 Urushigaitomachi, Takayama City,
Gifu 506-8686, Japan
TEL +81-577-32-1001



Date analyzed	2023/7/12
Analyzed by	Kuwabara
Oil name	Todomatsu
Scientific name	<i>Abies sachalinensis</i>
Extracted part	leaf and twig
Extraction method	High Temperature High Pressure Steam Distillation
Source of material	Hokkaido, Japan
Lot No.	80.7



	Compound Name	Area (%)
1	Santene	3.11
2	Tricyclene	1.34
3	alpha.-Pinene	17.66
4	Camphene	11.67
5	(-).beta.-Pinene	9.37
6	beta.-Myrcene	3.11
7	3-Carene	1.04
8	o-Cymene	1.14
9	D-Limonene	12.47
10	beta.-Phellandrene	15.41
11	Terpinolene	0.45
12	(+)-2-Bornanone	2.01
13	endo-Borneol	3.80
14	alpha.-Terpineol	0.65
15	Fenchyl acetate	0.57
16	Citral	0.43
17	Bornyl acetate	13.47
18	Terpinyl acetate	0.49
19	beta.-Caryophyllene	0.60
20	beta.-Eudesmene	1.20

We listed the 20 main compounds of this essential oil.
Please understand that we cannot identify all of the compounds.